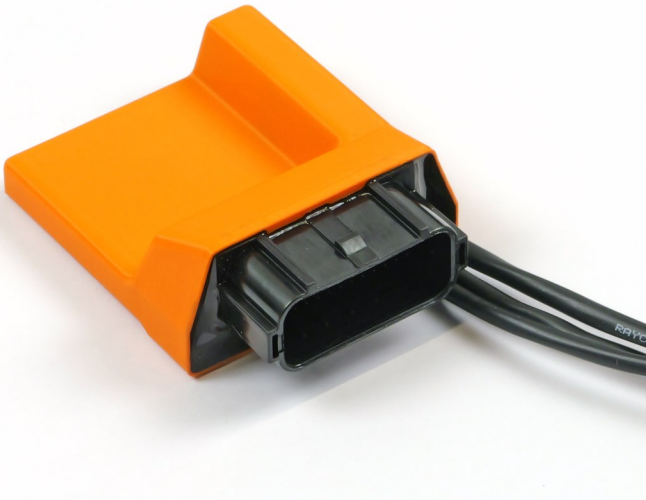


Datasheet

Carrot C-MX ECU Yamaha 2023



The Carrot C-MX engine control unit is specially developed for managing MX bikes. It is a plug and play unit, what means it is interchangeable with the original electronics without modifications. The ECU is programmable to your wishes in combination with the available programming software. In addition to this, the Carrot C-MX ECU is offering various extra functions, like launch control, wheelie control, traction control, datalogging and many more.

Application

- Advanced wheelie control strategy
- Integrated G-force and gyroscope sensor (3-axis)
- 2-phase launch control
- Full automatic hole-shot routine
- Programmable with user friendly software package
- 32MB datalogging memory
- Modern processor technology for faster response
- UEGO lambda control expansion
- Sensorless traction control
- Compatible with original handlebar-switch
- Map 1-2 selection possible during driving

- Plug and play ECU unit
- Integrated launch, wheelie and traction control
- 32MB datalogging memory
- CAN-bus communication & programming
- UEGO lambda control expansion

- Internal barometric pressure sensor
- Powershift function input
- Injector output + second injector output
- Fuel pump relay control output

Suitable models MX bikes

Yamaha YZ450F (2023)

Technical Specifications

- Plastic housing
- Plug and play connector
- Size 80mm x 62mm x 29mm (LxWxH)
- Power supply: 9v to 16v
- 1x CAN communication bus

Pricelist

Carrot C-MX ECU Yamaha 2023

Part number	Description	Price (ex. VAT)
C-010-0012	C-MX ECU (Yamaha YZ450F 2023)  Full programmable plug and play unit ready for installment. ECU comes standard with 2 pre tuned mappings. Included in box: <ul style="list-style-type: none"> • Carrot C-MX ECU • Diagnostic connector key • Quick-start manual 	€745,-
C-020-0020	Communication Interface (Yamaha YZ450F 2023)  Communication interface used in combination with the Carrot C-MX Management software and datalogging functionality. Included in box: <ul style="list-style-type: none"> • Communication interface • USB-memory stick with software/mappings/manuals • Datalog software license • Quick-start manual Software/updates free downloadable from our website: www.carrotps.com	€295,-
C-020-0100	Carrot UEGO controller MX (Yamaha YZ450F 2023)  UEGO lambda expansion for C-MX ECU Included in box: <ul style="list-style-type: none"> • UEGO lambda controller • Adapter wiring loom Yamaha • Quick-start manual 	€275,-
C-030-0009	Bosch LSU4.9 wide-band sensor  Wide band lambda sensor for measuring exhaust gas mixture in combination with UEGO controller. Original Bosch LSU4.9	€135,-